



### A museum for children.

Given the surface that we had to build - and the size of the site -, the museum could have taken the appearance of a « bunker ». In that massive shape, we wanted to integrate the idea of movement. Slides between levels appear to create a game in the pattern of full and empty spaces, as well as outdoor terraces.

### Revitalizing and facing a public library.

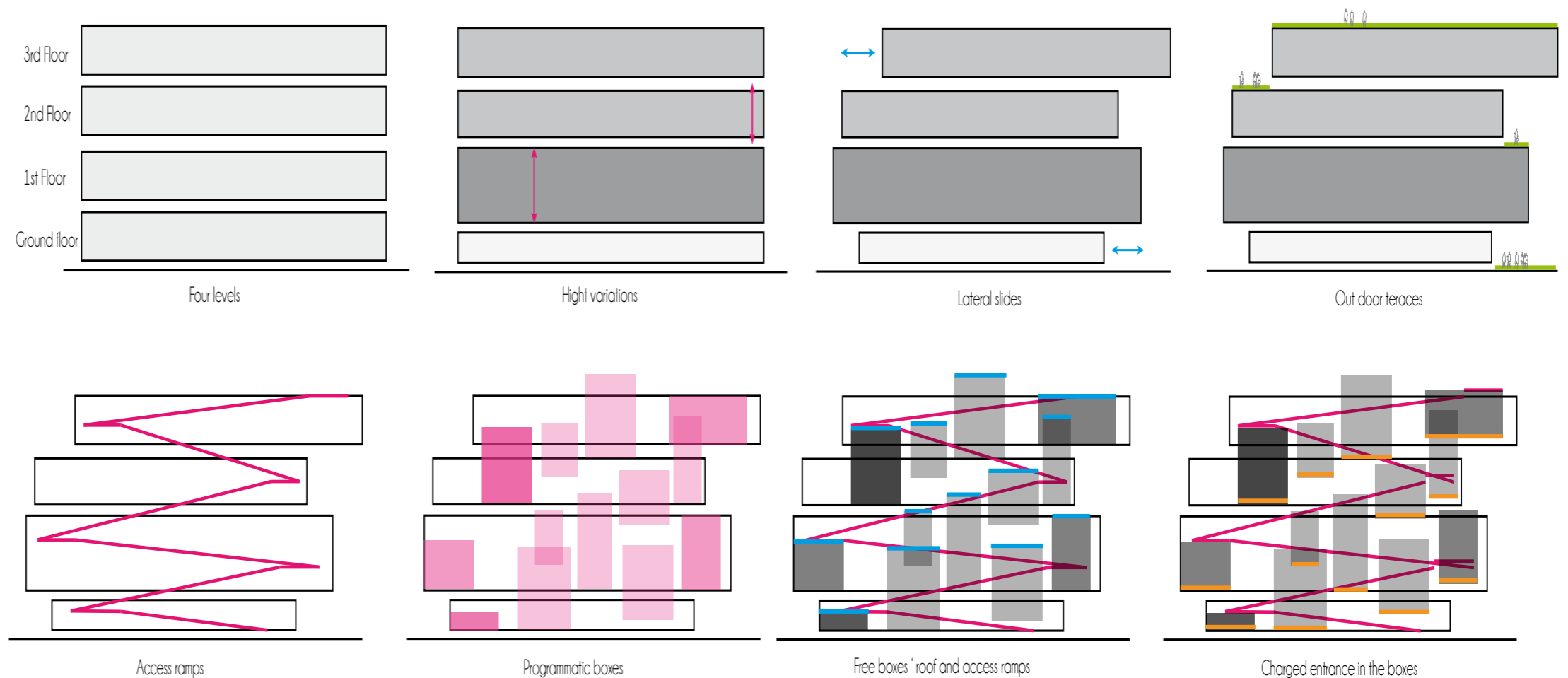
In the perspective of galvanizing the neighbourhood, we decided to make a part of the museum free of charge. To reach that goal, we designed thematic boxes that require payment at the entrance (with a magnetic card bought at the welcome desk). The top of the boxes are free and accessible from the ramps.

### A « boxtown » in Louisville.

To design an organised/de-organised set of boxes, we had to create a thread used to place the circulation in between spaces, developing tension and expansion. From the walkways, there are different views among boxes. Some of the boxes appear to be « floating » and are designed in double height. We can distinguish those forms by different colors on the façade.

### Chilling, working and parking.

Following the same idea of a « module », the park offers a path from the children's museum to the hi-tech incubator and the parking garage. The usually used façade of offices seemed inappropriate given the rest of the program. We chose to make it look like a more smaller-scaled building, using the same traditional materials that were used in housing projects.





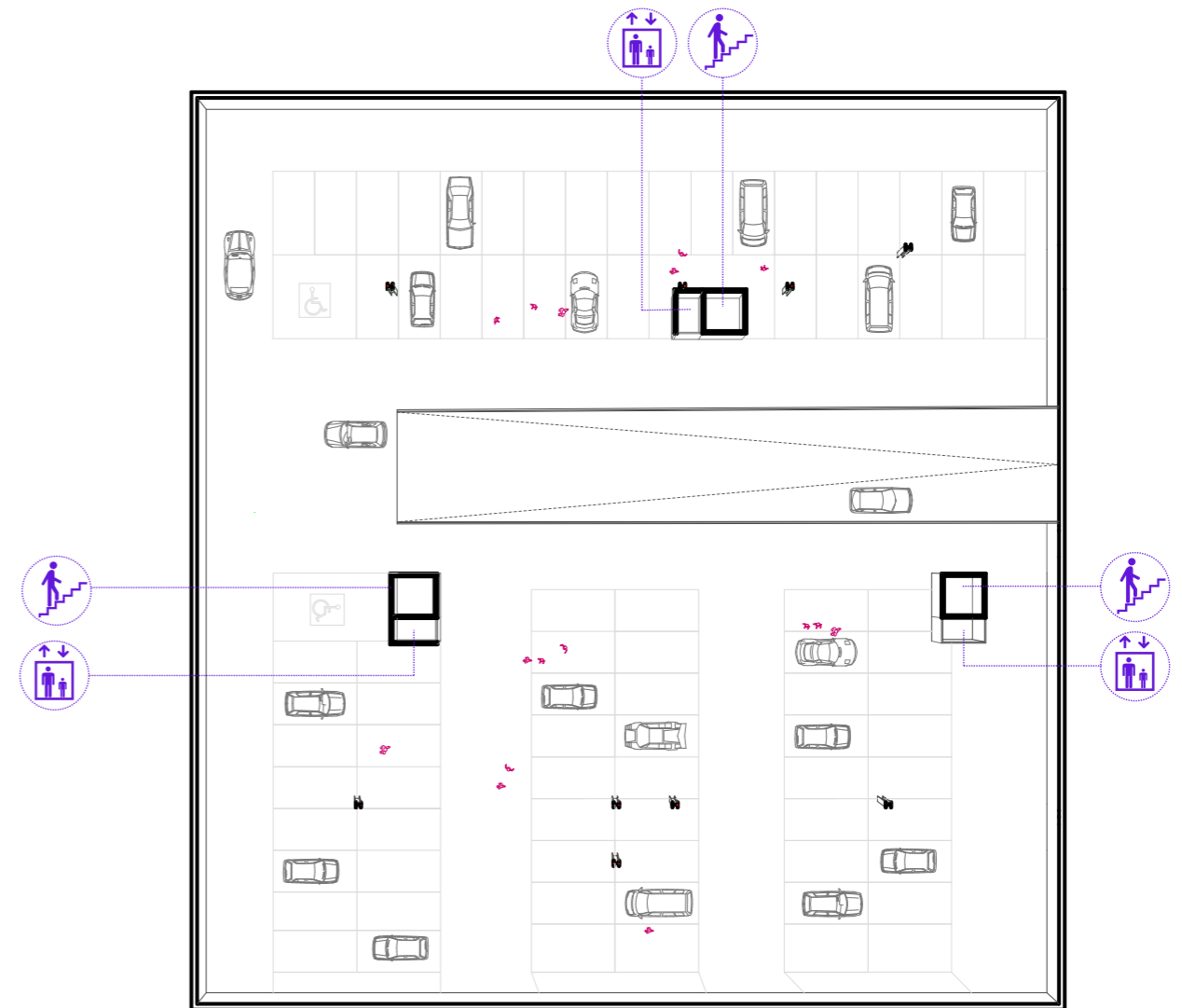
Site plan - Scale 1:5000



Massing model of site

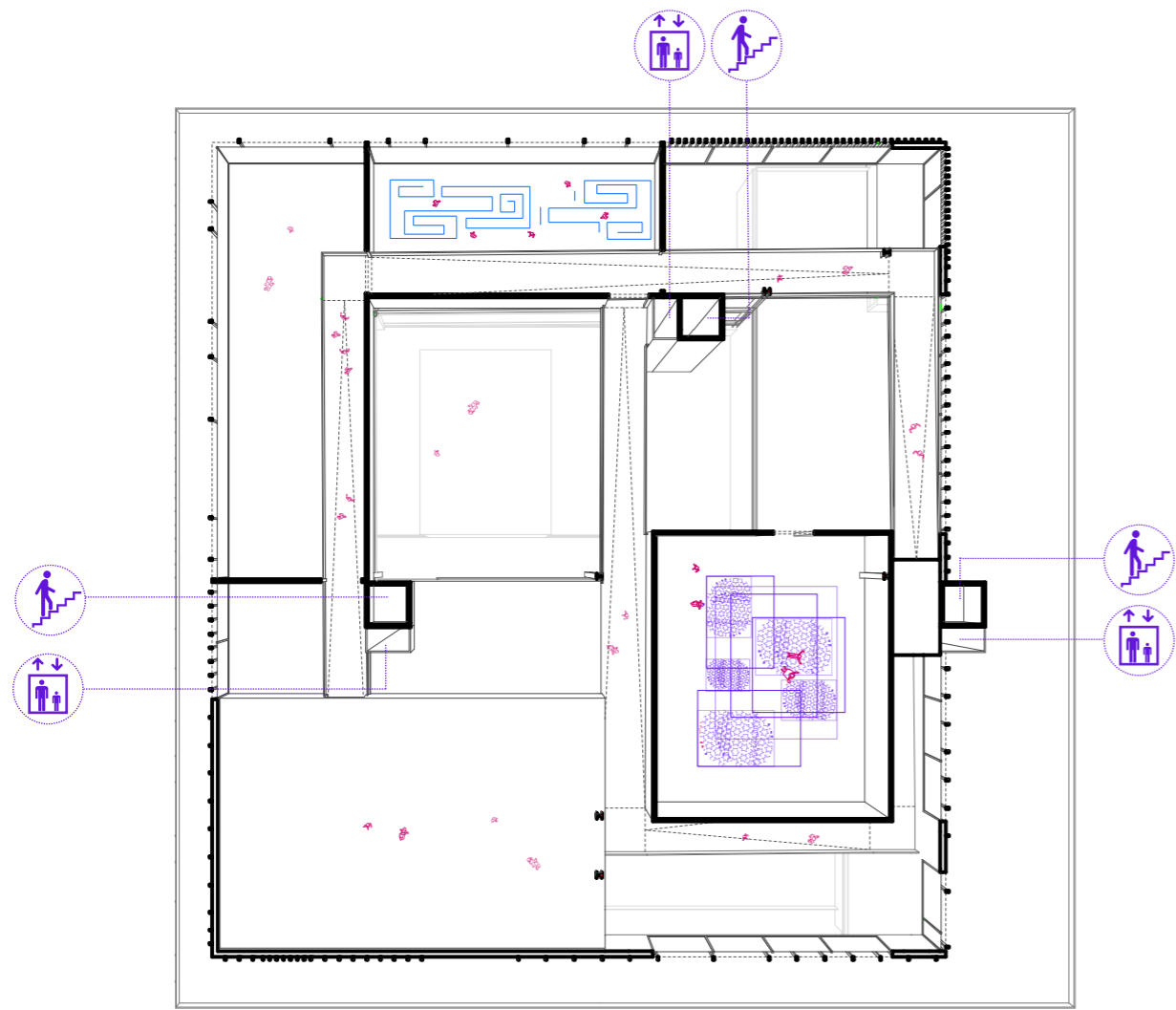


Park Plan - Scale 1.500

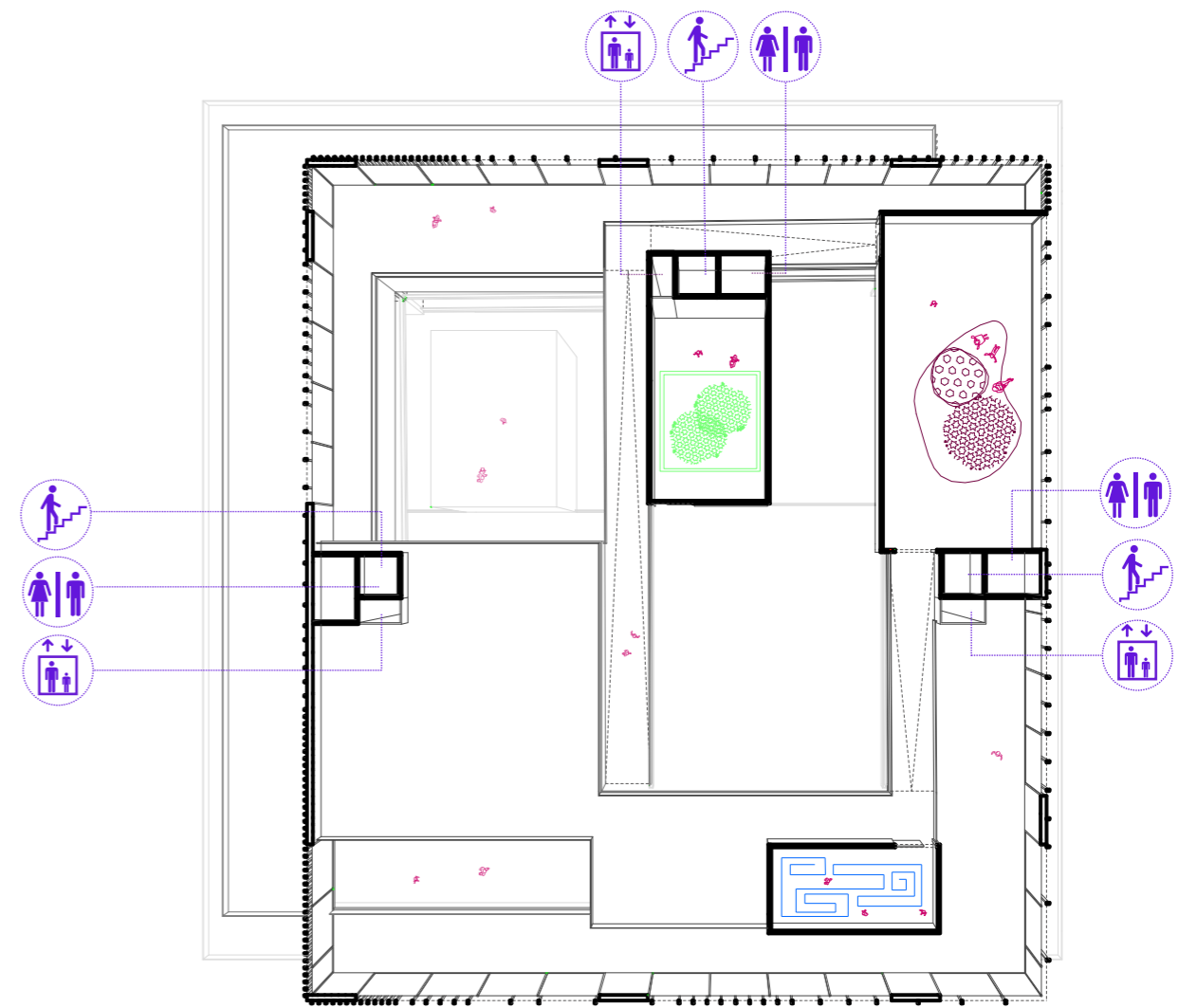


Parking floor - Scale 1.500

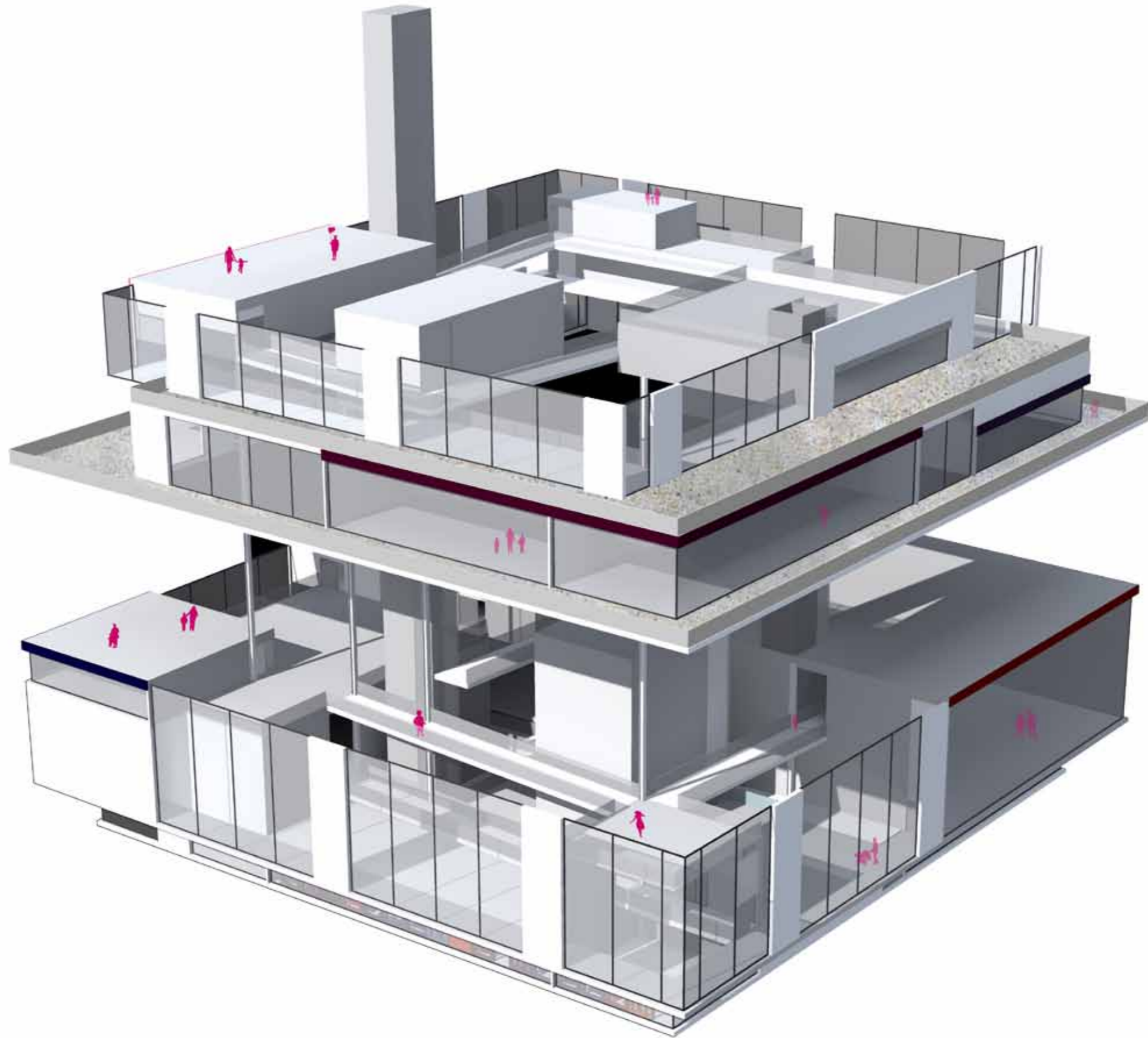




Second floor - Scale 1.500



Third floor - Scale 1.500



Axonometric view of the museum







North Elevation



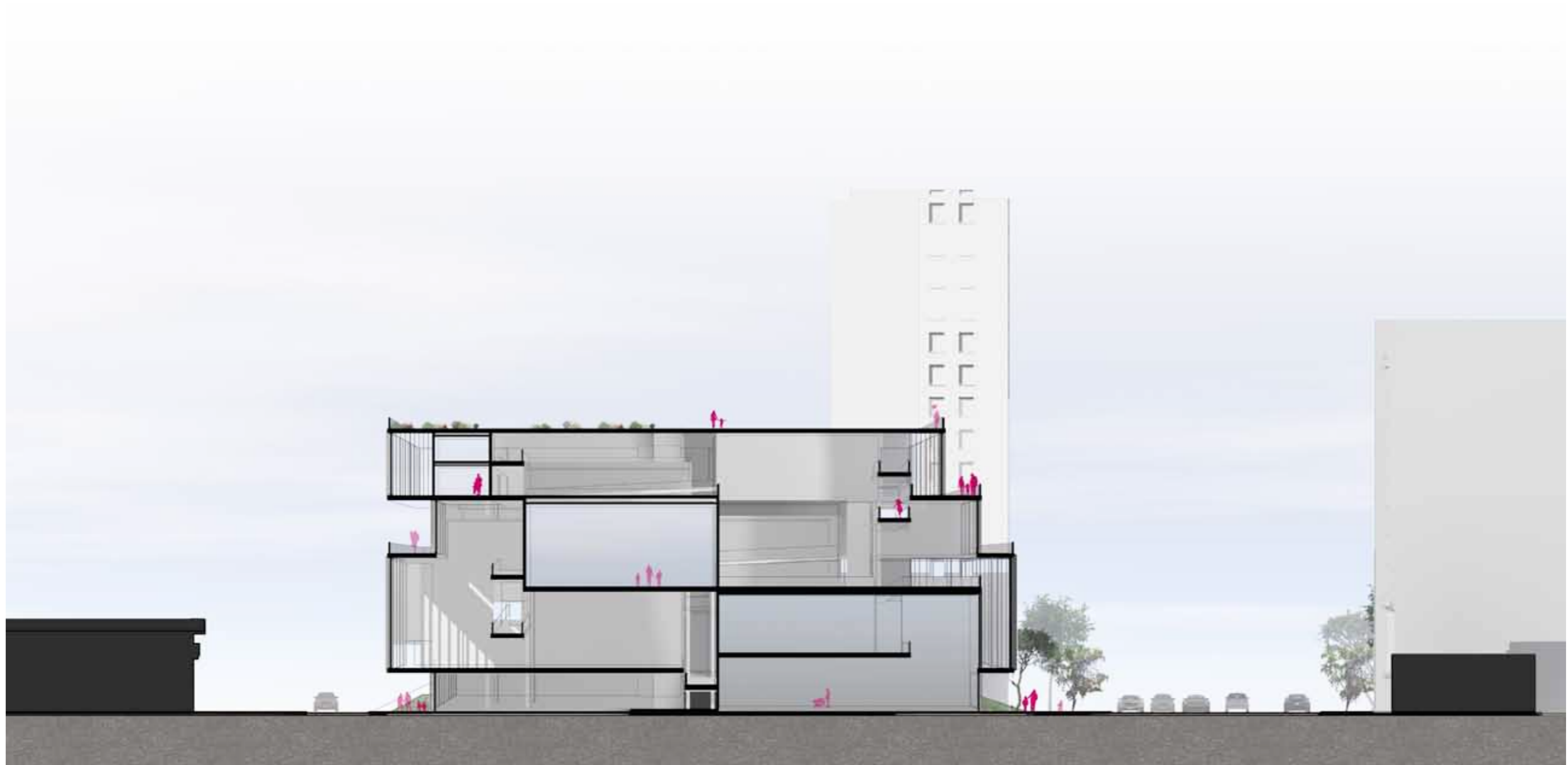
East Elevation



South Elevation



West Elevation



Section BB'



Perspective of the museum from Broadway



Hi-Tech incubator perspective from 2nd Street



Hi-Tech incubator perspective from the park

